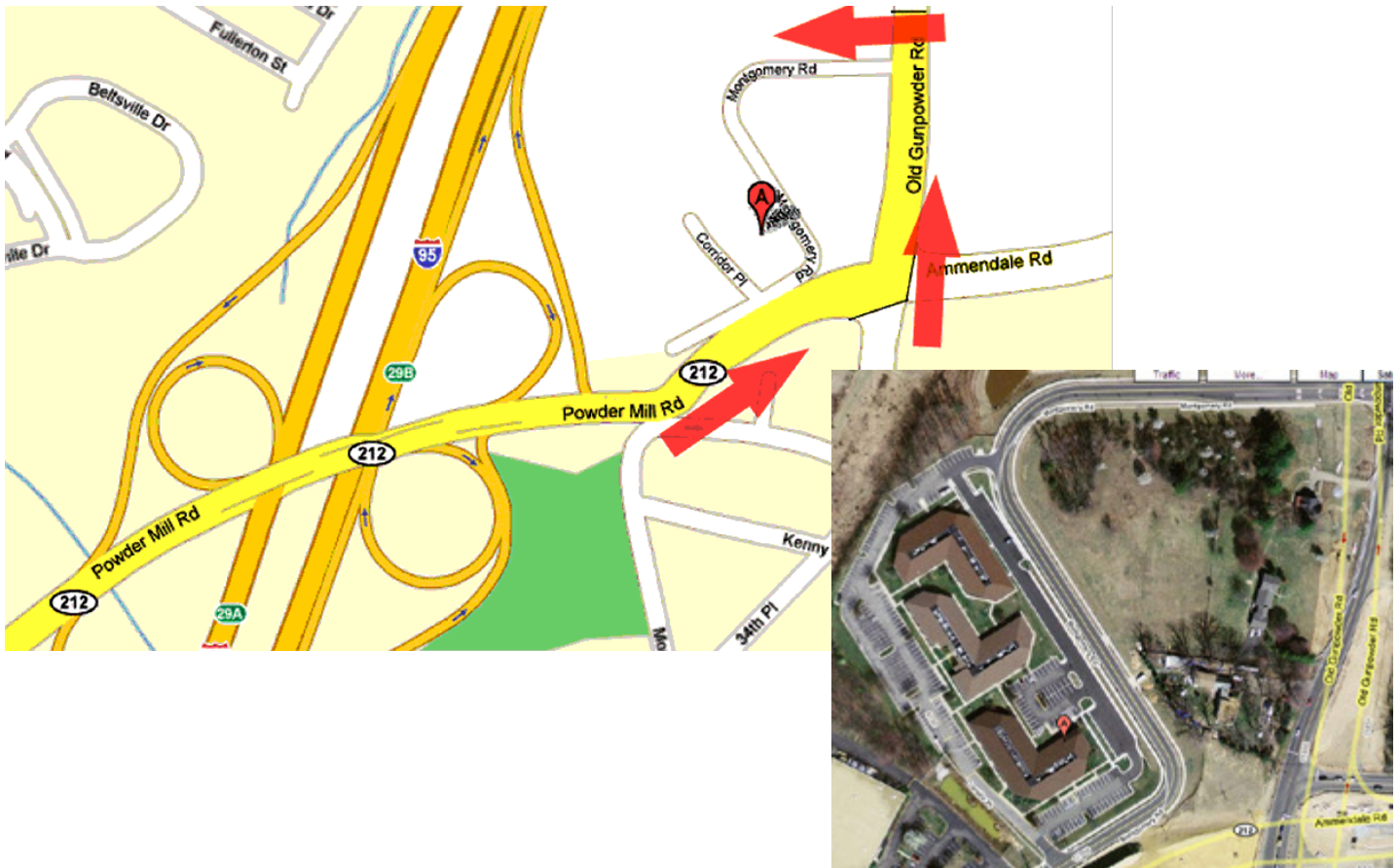


**Maryland Workers' Compensation Commission  
Central Maryland Regional Hearing Site**

**4780 Corridor Place, Suite D, Beltsville, Maryland 20705**



**Directions:**

From Interstate 95 take Exit 29A - Route 212 - toward Beltsville. Follow Route 212 (Powder Mill Road) to Old Gunpowder Road and make a left turn (at the first traffic signal) onto Old Gunpowder Road.

Proceed on this road and make the first left turn onto Montgomery Road.

Proceed 3/10 mile on this road and turn right at the second entrance of the Corridor Place office park.

Proceed into the parking lot to 4780 Corridor Place, Suite D. Directional signage is available.

Revised May 2012